

Autumn Term 1 2025

Willow Class

Key Stage 1

This half term in Willow Class
will be learning about



English

Our focus texts for English lessons
this term, include:

-The Way Back Home

Narrative – Story

-How To Grow A Unicorn

Non-fiction Instructions Imagination
/ Wonderful Creatures

-Strange Comic Poetry

Guided Reading Text:

-A Squash and a squeeze

Story Time Texts:

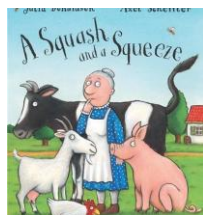
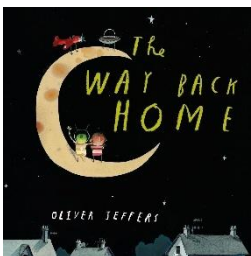
-The Giraffe, Pelly and Me

-Stars with Flaming Tails

Maths

Lessons this term for will focus on:

- Place Value
- Addition and Subtraction



Science

We will be learning about animals
including humans, covering the
following units:

- **Zoology**
- **Animal Diets**
- **Animal Survival**

RE

We will be exploring the big question:

**Who do Christians say made the
world?**

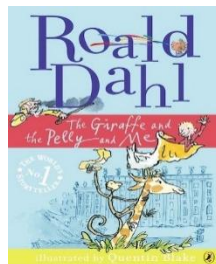
PSHE

We'll be learning about:

Being Me in My World

Computing

- Online safety and exploring
Purple Mash.
- Maze Explorers



History

We will learn about

-My Local Area (school and village)

using historical evidence and enquiry
skills

Art & Design

Focus: Drawing – Make your mark

Artist study: –Yayoi Kusama

We will learn about the Japanese
contemporary artist Yayoi Kusama, with
a specific focus on her polka dot
pumpkins. Activities will include, 3D clay
sculptures, collages.

PE

Games and Fitness

Music

.Hands, Feet, Heart



01325 730366



admin@ingletoncofeprimary.co.uk



www.ingletoncofeprimary.co.uk